



SEDCO INDUSTRIAL ESTATE
LAHAD DATU

SEDCO INDUSTRIAL ESTATE LAHAD DATU

The Key to Your Investment!

Industrial Land Lots

Now!
open for sale!

- **Lots ideal for light and medium industries.**
- **Strategically located**
 - 5 Km from Lahad Datu town
 - 5 Km from the Port
 - 5 Km from Airport
 - Sealed road
 - Adequate water supply
 - 3 Phase Electricity supply
 - Telephone service.
 - Labour supply within surrounding areas.

**PRICE FROM
RM 153,450
onwards**

SEDCO Industrial Estate Lahad Datu

Lahad Datu is one of the largest agricultural areas in the east coast of Sabah. It is particularly important for its oil palm plantations which cover an area of some 200,000 acres. Only about 5 minutes drive from the town centre and strategically located in a fast developing industrial area, this 98-acre SEDCO Industrial Estate is ready with adequate electricity, water supply and telephone lines. It has good road networks with the nearby airport and seaport facilities supporting economic and commercial activities.

SELLING PRICE

Lot No.	Sq. Meter	Sq. ft	Selling Price (RM .00)
DL 1	1,188	12,788	153,450.00
DL 2	1,200	12,917	155,000.00
DL 3	1,200	12,917	155,000.00
DL 6	1,200	12,917	155,000.00
DL 7	1,200	12,917	155,000.00
DL 8	1,188	12,788	153,450.00
DL 9	1,188	12,788	153,450.00
DL 10	1,200	12,917	155,000.00
DL 11	1,200	12,917	155,000.00
DL 14	1,200	12,917	155,000.00
DL 15	1,200	12,917	155,000.00
DL 16	1,188	12,788	153,450.00
DL 17	1,188	12,788	153,450.00
DL 18	1,200	12,917	155,000.00
DL 19	1,200	12,917	155,000.00

Location Plan



Developer;

SABAH URBAN DEVELOPMENT CORPORATION SDN. BHD.
(A wholly owned subsidiary of SEDCO)

(Co. No. 11700-T)

Suite 713-715, 718A & 718B, 7th Floor, Centre Point Sabah, P.O.Box 11911, 88821 Kota Kinabalu, Sabah, Malaysia.

088-251144, 264 270, 264 271 Fax : 088-239 469

Website : www.sudc.com.my E-mail: sudc1@po.jaring.my

FOR SALE

LAHAD DATU

INDUSTRIAL LAND LOTS & Single Storey Semi-Detached WORKSHOP



SEDICO INDUSTRIAL ESTATE
 DEVELOPING INDUSTRIAL ZONES

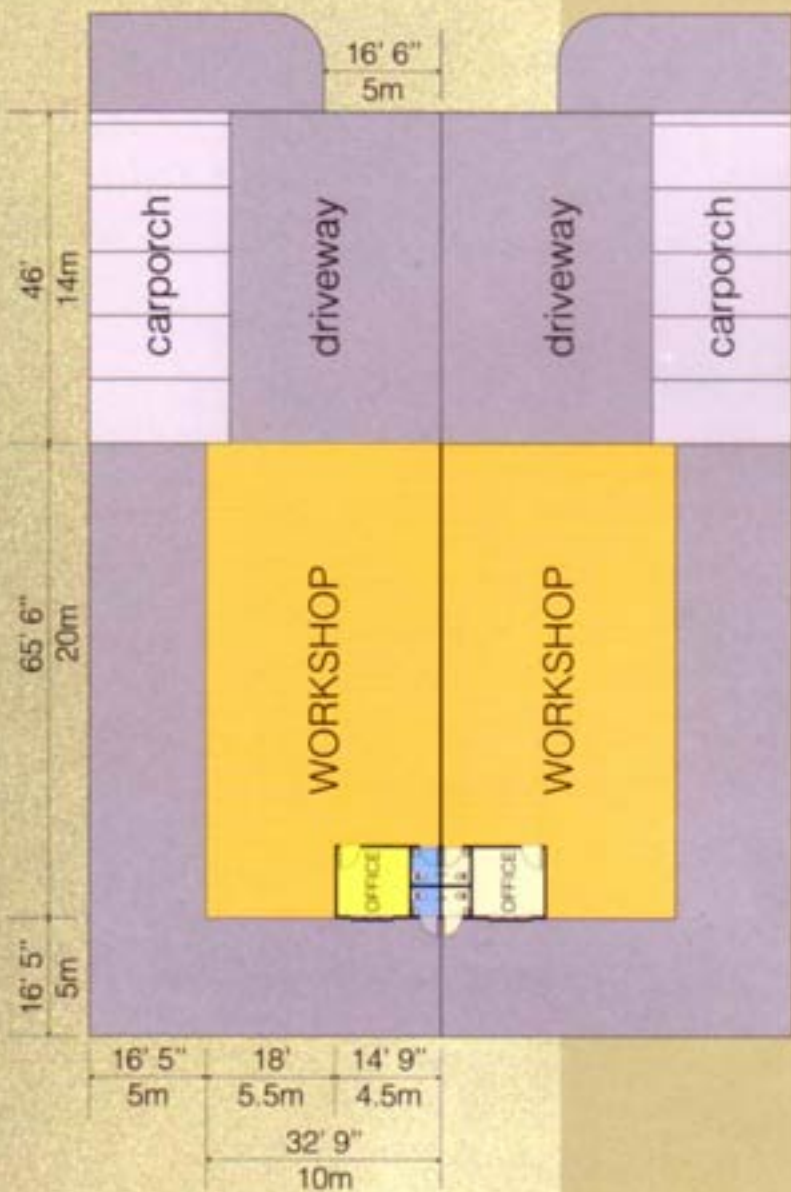
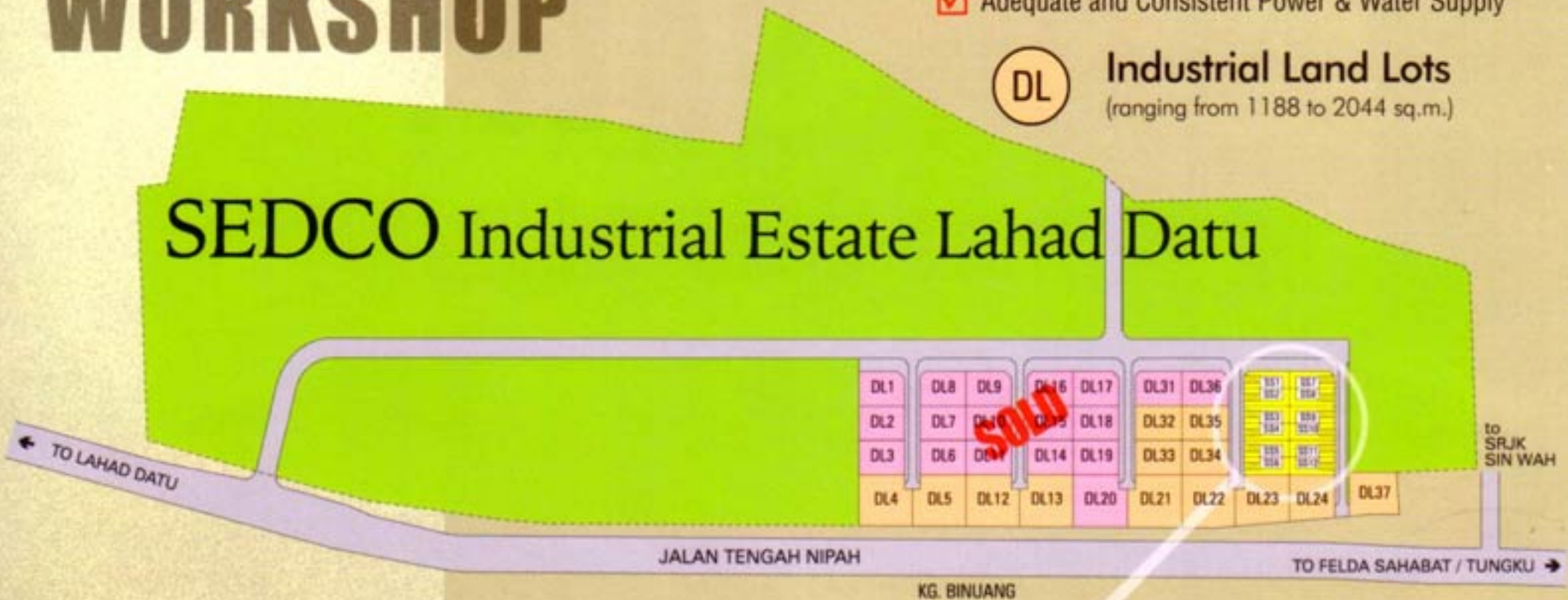


www.sudc.com.my

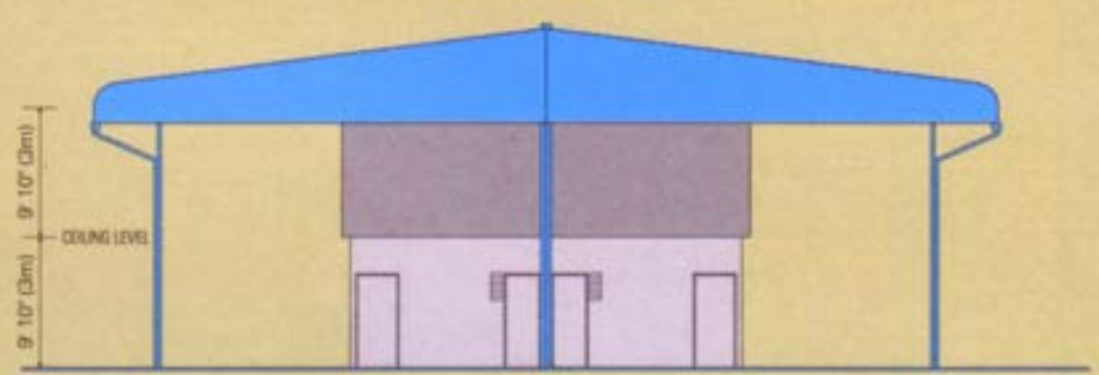
- Strategically located within a radius of 5km to Lahad Datu town, Airport & Seaport
- Excellent Infrastructure and Road Network
- Business Opportunities
- Availability of Suitable Labour
- Adequate and Consistent Power & Water Supply

DL Industrial Land Lots
 (ranging from 1188 to 2044 sq.m.)

SEDICO Industrial Estate Lahad Datu



SS Workshop
 Single Storey
 Semi-Detached
 Standard Lots 15 x 40 meter
 (approximately 600 sq.m.)



Flexible & Versatile
 these 12 units single storey semi-detached workshop are an excellent investment for business success.

So Hurry!
 Don't miss this Golden Opportunity
 ...on a first-come, first-served basis

* All information, specifications and plans contained herein are subject to amendments as may be required by the authorities or the developer's project consultants and cannot form part of an offer or contract. All art rendering and picture in this brochure are artist's impressions only.